

This drawing is the property of Garner Industries.
It is issued in confidence on the condition that it
is to be returned on request and that it is not to
be copied or reproduced in any way, or used in the
manufacture of the subject matter thereof without
the written consent of Garner Industries.

DIMENSIONS ARE IN INCHES UNLESS NOTED OTHERWISE

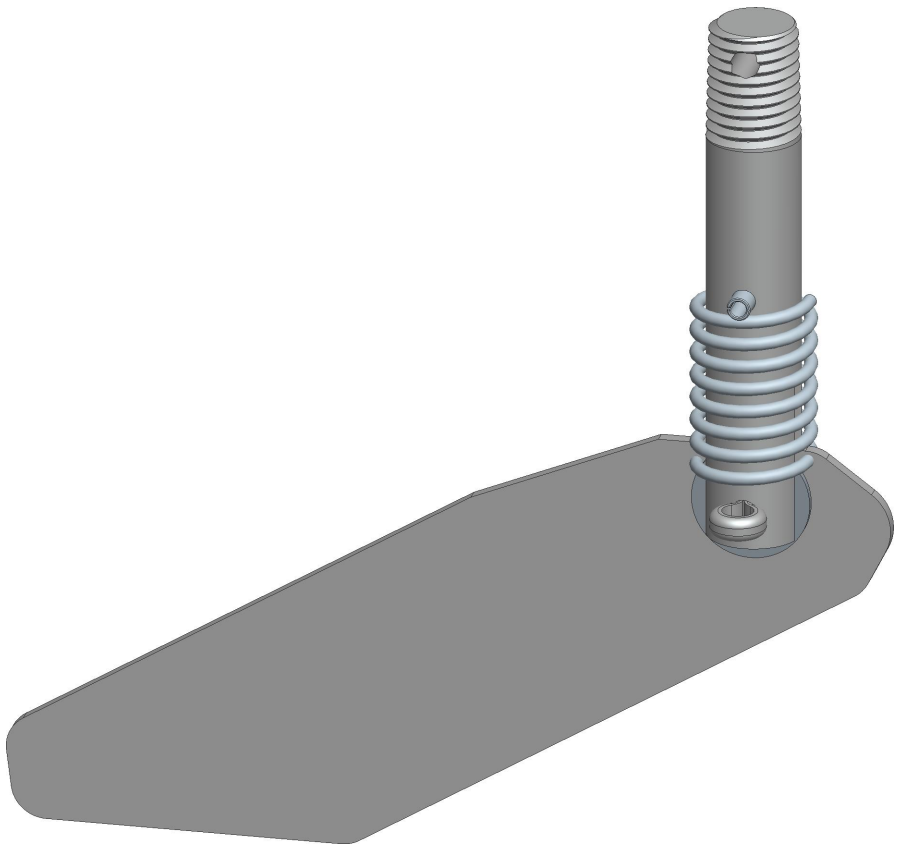
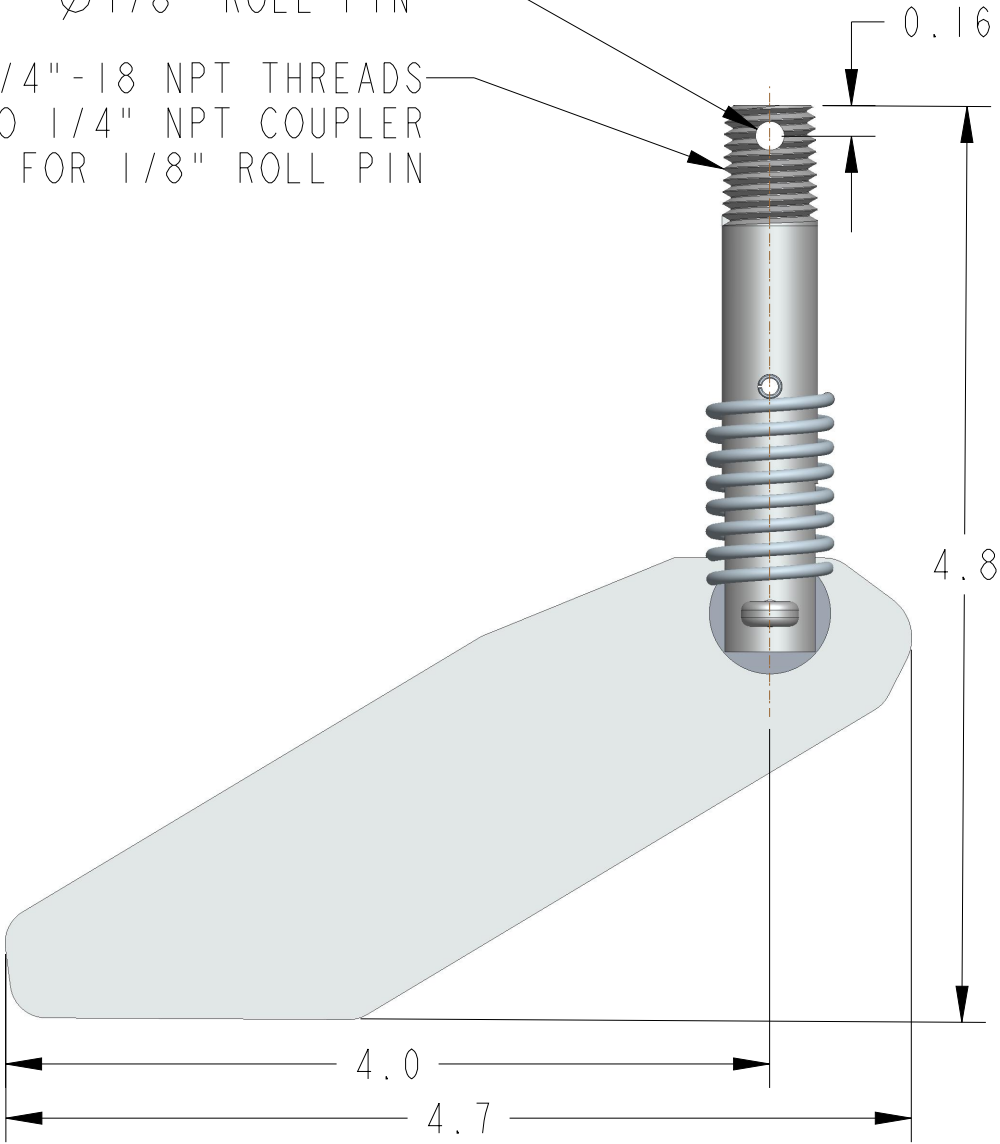


Division of Garner Industries / 7201 North 98th Street / Lincoln, NE 68507
(402) 434-9102 / fax (402) 434-9144 \ www.binmaster.com



Ø0.15 THRU
FOR USE WITH
Ø1/8" ROLL PIN

1/4"-18 NPT THREADS
FOR ATTACHMENT TO 1/4" NPT COUPLER
PRE-DRILLED FOR 1/8" ROLL PIN



SCALE 1.000

SCALE 1.000

TITLE: MTG DIM, THREADED SNGL FOLDING PADDLE **Model No.:** GRP-36 **P/N:** 416-0556 **DWG No.:** 418-0194 **MATERIAL:** 304 STAINLESS STEEL

REVISION
A

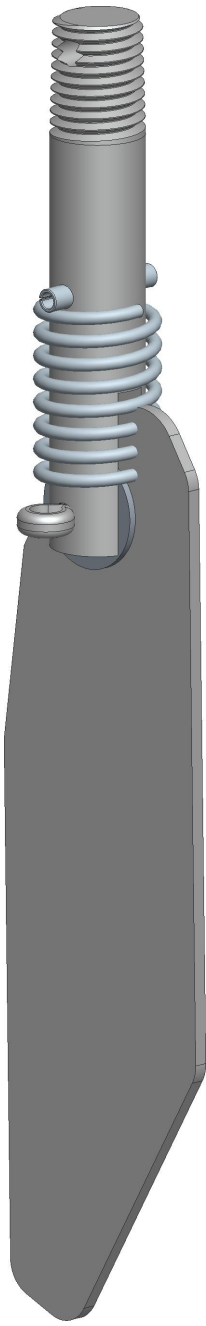
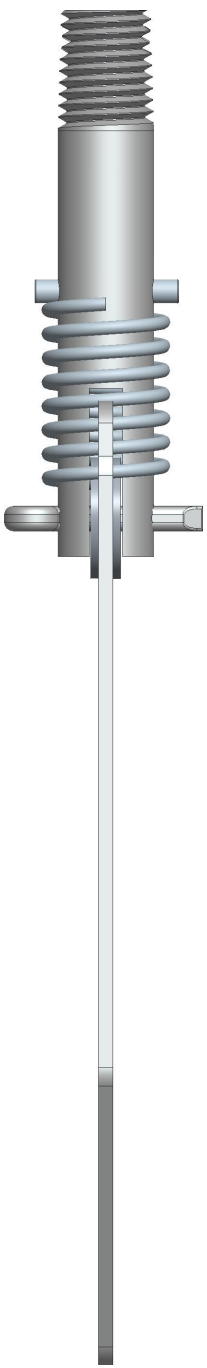
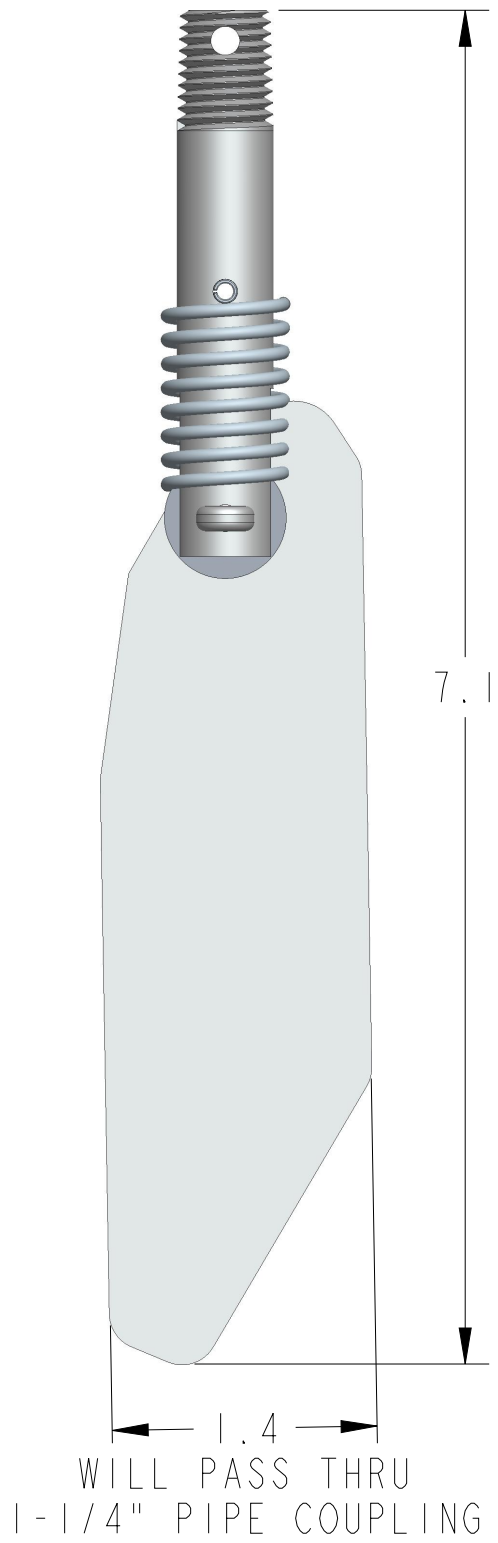
PAGE
1 OF 2

This drawing is the property of Garner Industries.
It is issued in confidence on the condition that it
is to be returned on request and that it is not to
be copied or reproduced in any way, or used in the
manufacture of the subject matter thereof without
the written consent of Garner Industries.

DIMENSIONS ARE IN INCHES UNLESS NOTED OTHERWISE



Division of Garner Industries / 7201 North 98th Street / Lincoln, NE 68507
(402) 434-9102 / fax (402) 434-9144 \ www.binmaster.com



SCALE 1.000

SCALE 1.000

TITLE: MTG DIM, THREADED SNGL FOLDING PADDLE **Model No.:** GRP-36 **P/N:** 416-0556 **DWG No.:** 418-0194 **MATERIAL:** 304 STAINLESS STEEL

REVISION
A

PAGE
2 OF 2