

Monitor Tank Levels Remotely

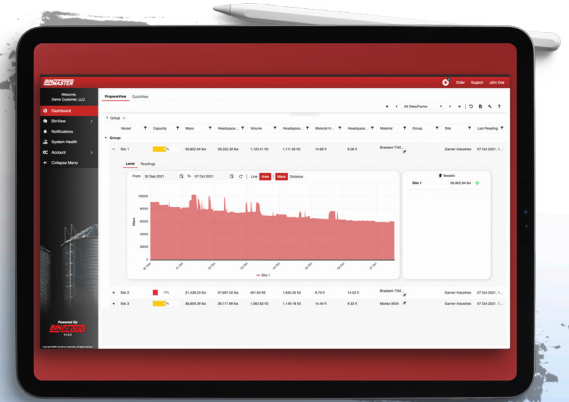


BinMaster's intelligent monitoring solution enables propane dealers to track tank levels remotely. It combines the benefits of using wireless sensor technology and ethernet or cellular data transfer to get reliable, timely information to optimize deliveries. You get all this with PropaneView™ ... a new solution from BinMaster.

PROPANEVIEW™

Automate Tank Levels & Optimize Delivery Schedules

PropaneView™ helps you manage propane in storage tanks either on your premises or a customer's location. By knowing which tanks are ready to be filled, you can plan delivery schedules, map optimal routes to save time, and optimize the use of your delivery vehicles. With automated alerts, you can reduce emergency calls and increase customer satisfaction.



How PropaneView™ Works

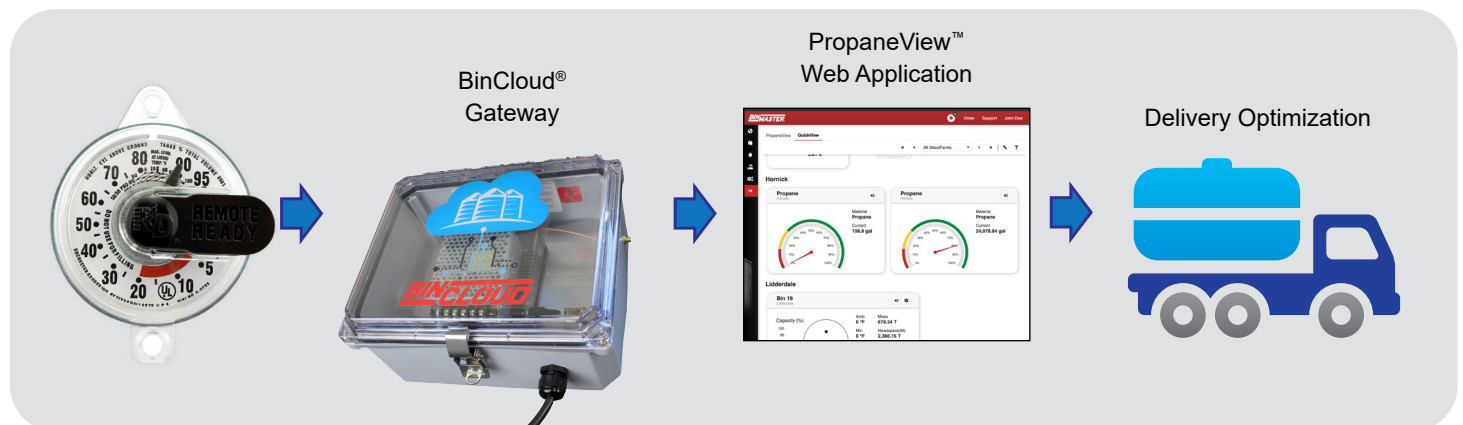


A level sensor on the tank sends data at pre-defined time intervals over a secure ethernet or cellular data transfer network. The sensor is powered by replaceable batteries that last up to 5 years and are easy to replace. PropaneView™ offers simple setup that requires no special knowledge or programming.



PropaneView's Many Benefits

- Know the fill level of tanks at all times
- Be alerted by text or email to those ready to fill
- Prevent customers from running out for fewer emergency deliveries
- Reduce number of service calls
- Control access to data by individuals within your company
- Save time, energy, manpower, and provide better customer service



800.278.4241 | 402.434.9102
7201 N. 98th St., Lincoln, NE 68507
www.binmaster.com | info@binmaster.com